

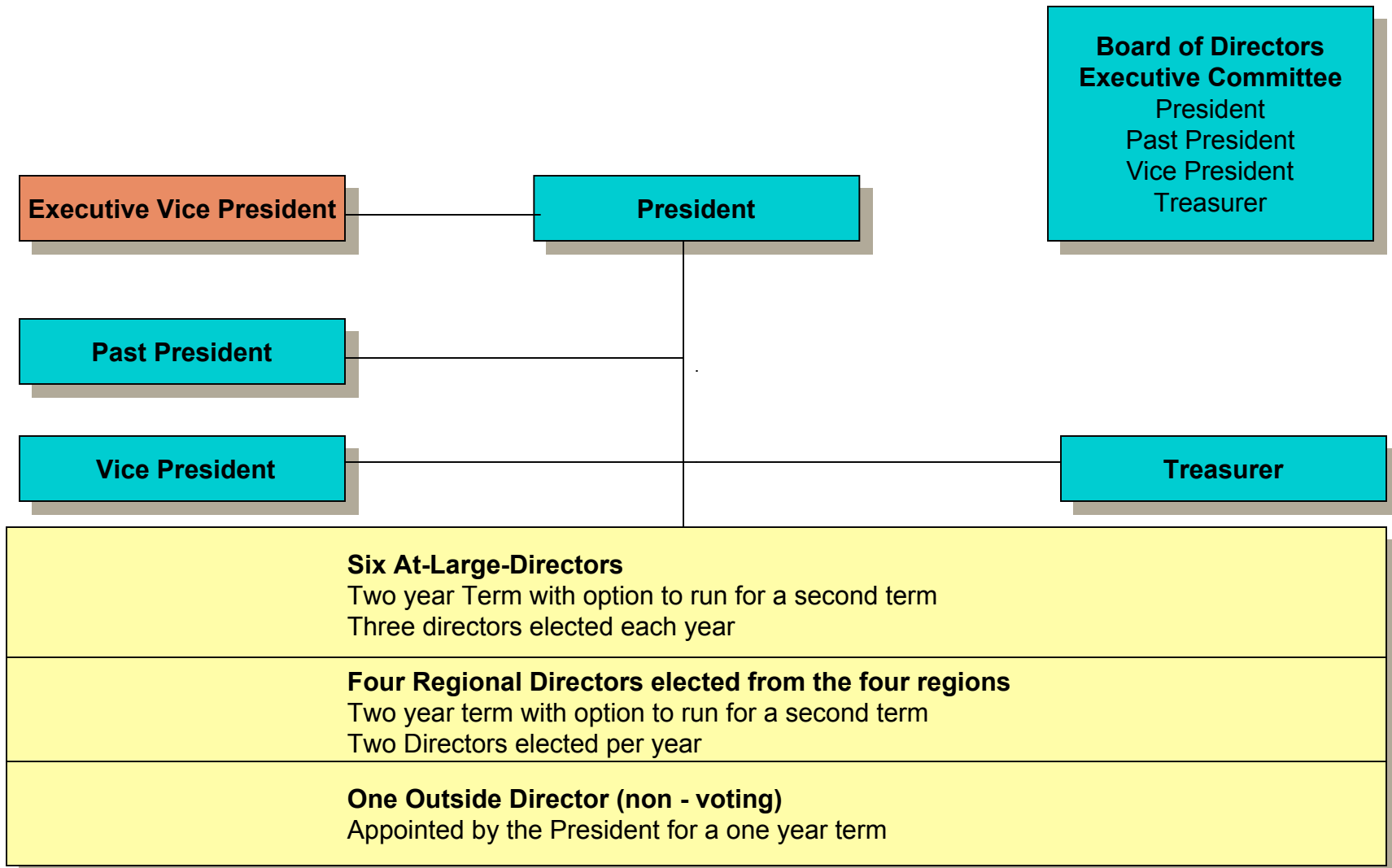


Illuminating
ENGINEERING SOCIETY

Organizational Structure



Illuminating Engineering Society of North America Board of Directors



Illuminating Engineering Society of North America

Board Committees

Finance

Chair: Treasurer
(3) members

Strategic Planning & Communication

Chair: Vice President
(3) members

Organizational Development

Chair: Appointed by President
(3) members

Knowledge

Chair: Appointed by President
(4) members

Leadership Development & Cultural Heritage

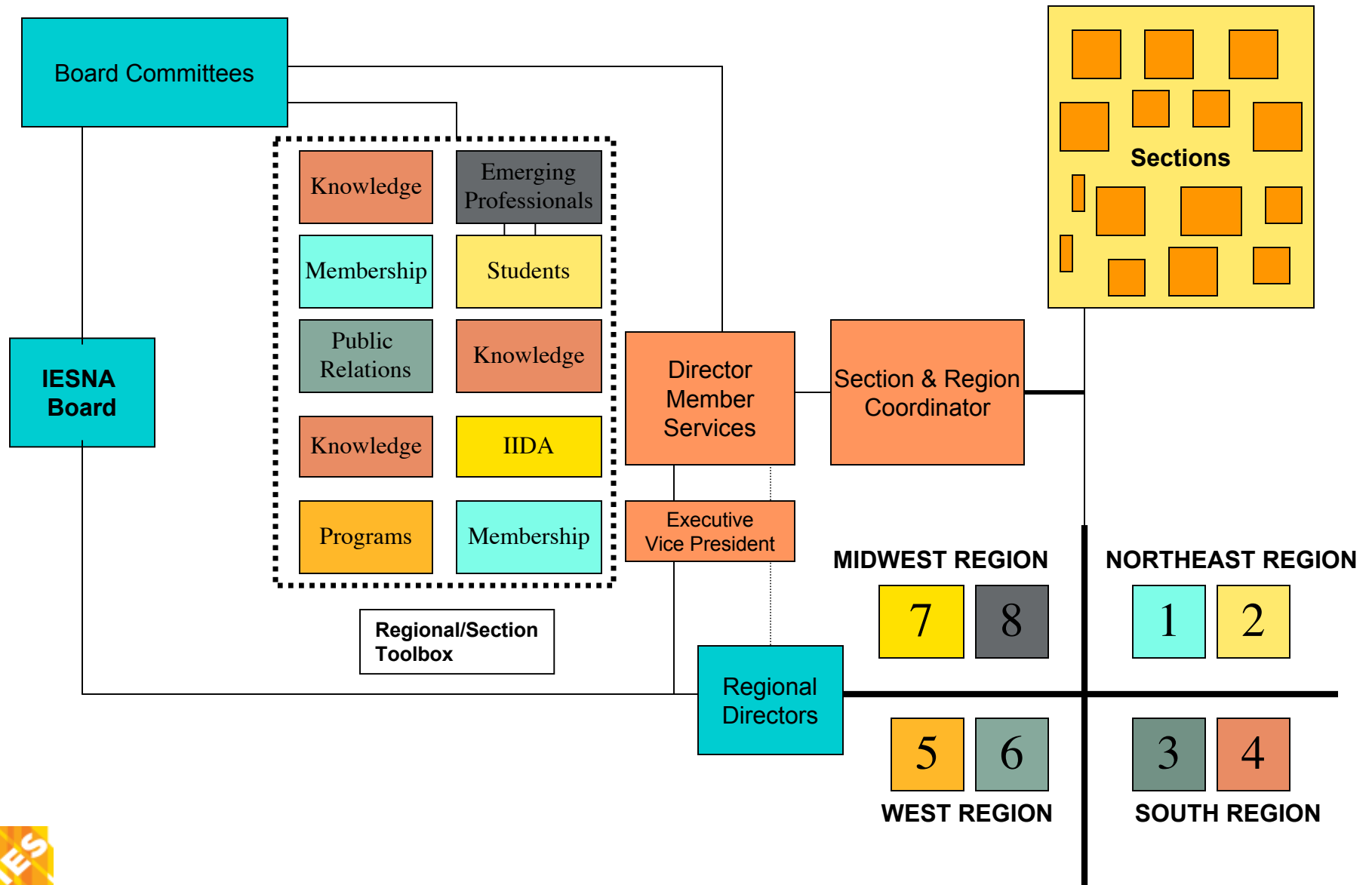
Chair: Appointed by President
(3) members

Each Board member not serving as a chair will serve on two Board Committees.

Appointment to committees will be made by the President on an annual basis based on interest and the skills of the Board member.



Illuminating Engineering Society of North America Region / District / Section Organizational Structure



District #1

Maine

Portland (*Down East*)

New Brunswick

Fredericton (*Fiddlehead*)

Moncton (*Northumberland*)

Newfoundland

Nova Scotia

Halifax (*Bluenose*)

Nunavut Territories

Ontario

Ottawa (*National Capital*)

Toronto (*Toronto*)

Prince Edward Island

Quebec

Montreal (*Montreal*)

District #2

Connecticut

Hartford (*Western New England*)

Massachusetts

Boston (*New England*)

New Hampshire

New Jersey

Montclair (*New Jersey*)

New York

Albany (*Mohawk Hudson*)

Buffalo (*Western New York*)

Long Island (*Long Island*)

New York City (*New York*)

Rochester (*Rochester*)

Syracuse (*Central New York*)

Westchester County (*Mid-Hudson Valley*)

Pennsylvania

Harrisburg (*Susquehanna*)

Philadelphia (*Philadelphia*)

Pittsburgh (*Pittsburgh*)

Allentown (*Lehigh Valley*)

Rhode Island

Providence (*Rhode Island*)

Vermont



Northeast Region

District #3

Alabama

Birmingham (*Alabama*)

Delaware

District of Columbia

District of Columbia (*Capital*)

Florida

Jacksonville (*Northeast Florida*)

Miami (*Southeast Florida*)

Orlando (*Central Florida*)

Palm Beach (*Intracoastal*)

Pensacola (*Gulf Coast*)

Tampa (*West Florida*)

Georgia

Atlanta (*Georgia*)

Maryland

Baltimore (*Maryland*)

Tennessee

Chattanooga (*Smoky Mountain*)

Memphis (*Mid-South*)

Nashville (*Tennessee Valley*)

Mississippi

Jackson (*Mississippi*)

North Carolina

Charlotte (*Tar Heel*)

Raleigh (*East Carolina*)

Winston-Salem (*Greater Triad*)

Puerto Rico

San Juan (*Puerto Rico*)

South Carolina

Charleston (*Palmetto*)

Greenville (*Piedmont*)

Virginia

Norfolk/Virginia Beach (*Tidewater*)

Richmond (*Virginia*)

Roanoke (*Blue Ridge*)

West Virginia

District #4

Arkansas

Little Rock (*Arkansas*)

Louisiana

New Orleans (*New Orleans*)

Mexico

Mexico City (*Mexico*)

New Mexico

Albuquerque (*Rio Grande*)

Oklahoma

Oklahoma City (*Central Oklahoma*)

Texas

Austin (*Texas Capital*)

Dallas (*North Texas*)

Fort Worth (*West Texas*)

Houston (*San Jacinto*)

San Antonio (*Alamo*)



South Region

District #5

Arizona

Phoenix (*Arizona*)
Tucson (*Southern Arizona*)

California

Fresno (*Yosemite*)
Los Angeles (*Los Angeles*)
Orange County (*Orange*)
Sacramento (*Mother Lode*)
San Bernardino/Riverside Counties (*Inland Empire*)
San Diego (*San Diego*)
San Francisco (*Golden Gate*)
Santa Barbara (*Mission*)

Colorado

Denver (*Rocky Mountain*)

Hawaii

Honolulu (*Hawaii*)

Nevada

Las Vegas (*Las Vegas*)
Reno (*Sierra Nevada*)

Utah

Salt Lake City (*Utah*)

District #6

Alaska

Anchorage (*Northern Lights*)

Alberta

Calgary (*Chinook*)
Edmonton (*Northern Gateway*)

British Columbia

Vancouver (*British Columbia*)
Victoria (*Vancouver Island*)

Idaho

Manitoba

Winnipeg (*Winnipeg*)

Montana

Northwest Territories

Oregon

Portland (*Oregon*)

Saskatchewan

Washington

Seattle (*Puget Sound*)

Wyoming

Yukon Territory



District #7

Illinois

Chicago (*Chicago*)

Davenport/Moline (*Blackhawk*)

Iowa

Davenport/Moline (*Blackhawk*)

Des Moines (*Iowa*)

Kansas

Kansas City (*Heart of America*)

Topeka (*Flint Hills*)

Wichita (*Central Kansas*)

Minnesota

Minneapolis/St. Paul (*Twin Cities*)

Missouri

Kansas City (*Heart of America*)

St. Louis (*St. Louis*)

Nebraska

Omaha (*Great Plains*)

North Dakota

South Dakota

Wisconsin

Madison (*Madison*)

Milwaukee (*Milwaukee*)

District #8

Indiana

Indianapolis (*Indiana*)

Kentucky

Cincinnati/Louisville (*Ohio Valley*)

Michigan

Detroit (*Michigan*)

Grand Rapids (*Western Michigan*)

Ohio

Cincinnati/Louisville (*Ohio Valley*)

Cleveland (*Cleveland*)

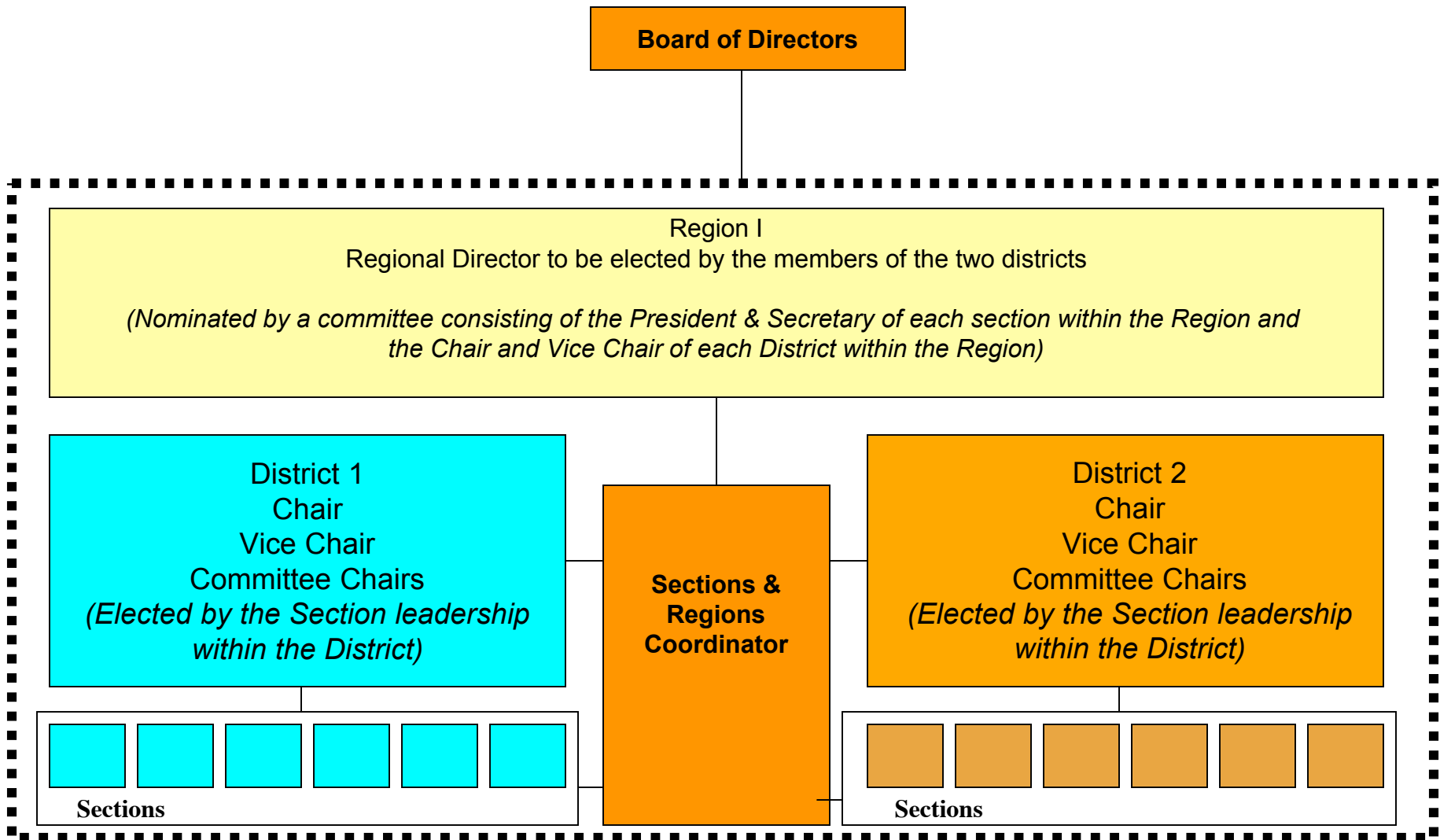
Columbus (*Buckeye*)

Dayton (*Miami Valley*)

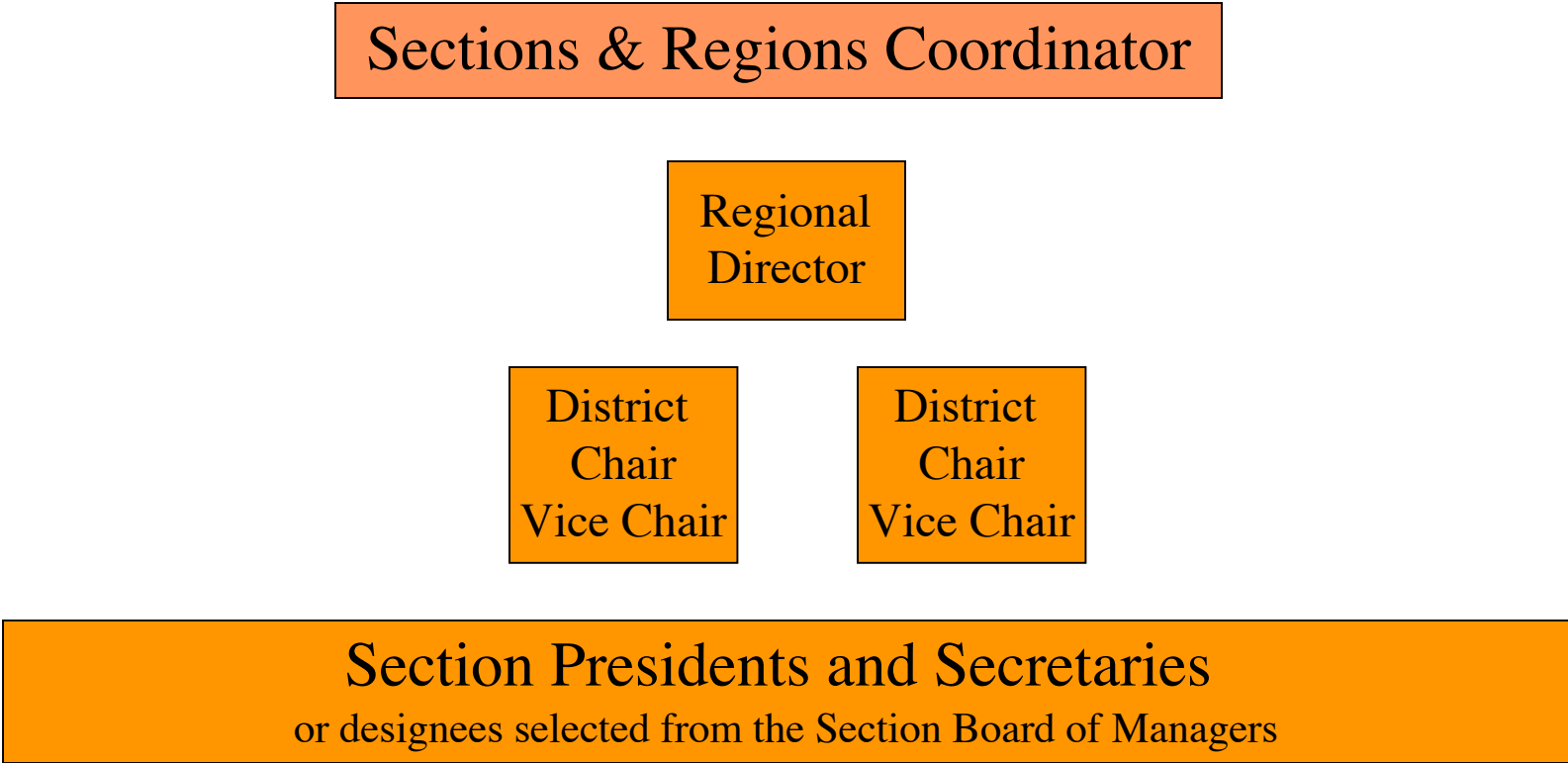
Toledo (*Toledo Area*)



Illuminating Engineering Society of North America Region / District / Section Organizational Structure



Region Meetings



Regional Meetings shall occur at least once each year



Regional Membership Council

Sections & Regions Coordinator

Chairs of the Board Committees

Northeast
Regional
Director

South
Regional
Director

West
Regional
Director

Midwest
Regional
Director

District
Chair
Vice Chair

District
Chair
Vice Chair

District
Chair
Vice Chair

District
Chair
Vice Chair

District
Chair
Vice Chair

District
Chair
Vice Chair

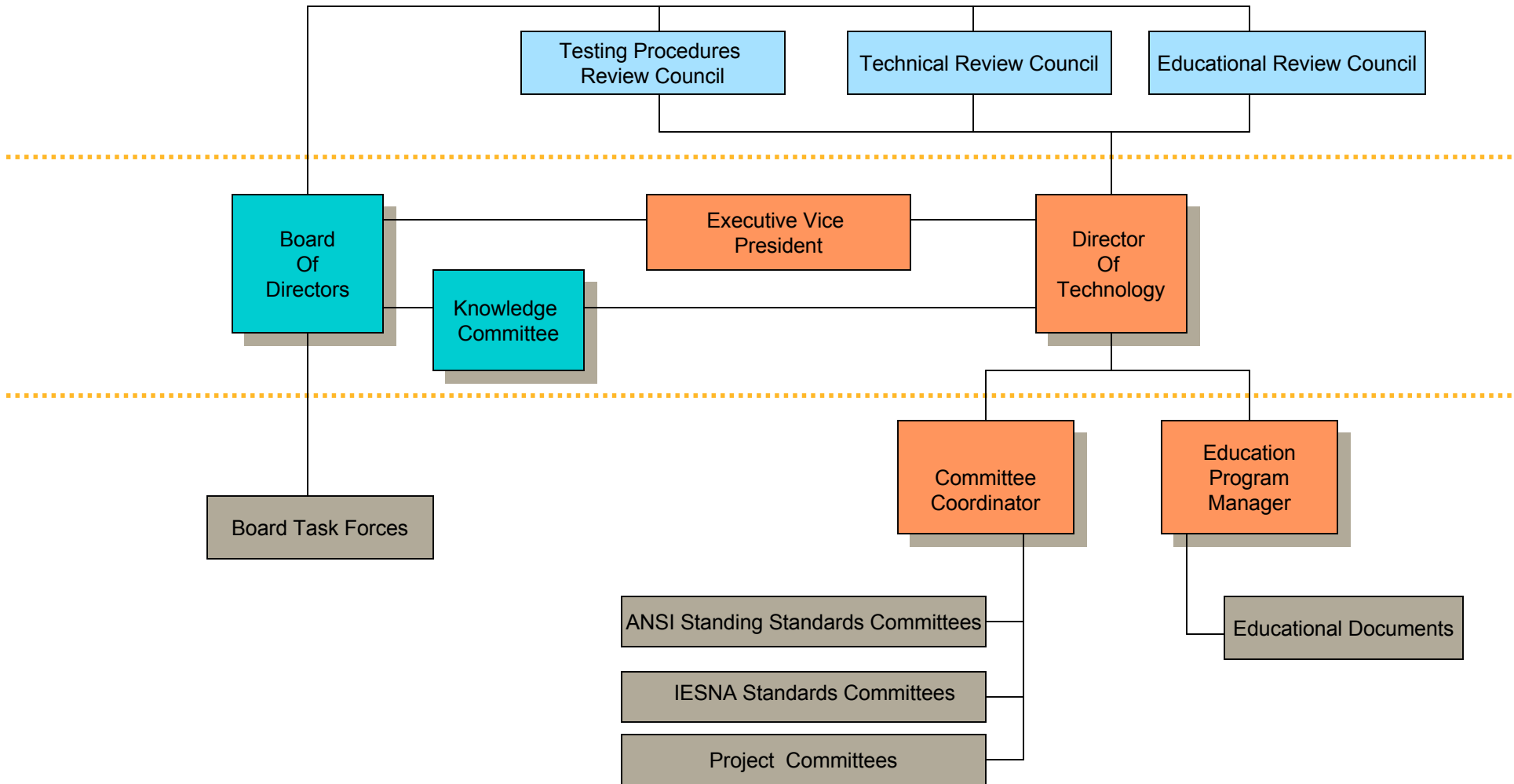
District
Chair
Vice Chair

District
Chair
Vice Chair

Regional Membership Council shall meet at least once each year



Illuminating Engineering Society of North America Committee Organizational Structure



Illuminating Engineering Society of North America Nominating Organizational Structure

President, Past President, and Immediate Past President

Regional Director's from the
Northeast, South, West and Midwest

Four At-Large-Representatives
appointed by the Board



Illuminating Engineering Society of North America Staff Organizational Structure

